

# HSM | HSM-eco

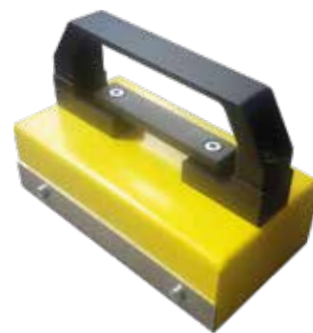
## Manual Sorting Magnets | Magnetic Sweeper

The manual sorting magnet is preferably used for separating bulk material and lifting small parts such as bolts, nuts, nails or chips.

The magnetic sweeper attracts small magnetic parts like chips, also at difficult access. By pulling out the handle the chips fall down.



HSM-eco



HSM



Magnetic sweeper

### Applications

- For holding small parts

### Features

- Switchable ON/OFF
- Light design, compact and sturdy



Technical data	Supporting surface	Overall height	Weight	Item no.	Preis
	[mm]	[mm]	[kg]		[€]
HSM	188x105	130	1,7	64760	220,00
HSM-eco	155x135	205	2,6	21899	80,00
Magnetic Sweeper	Ø 25	L=380	0,5	42295	75,00

Prices are subject to change